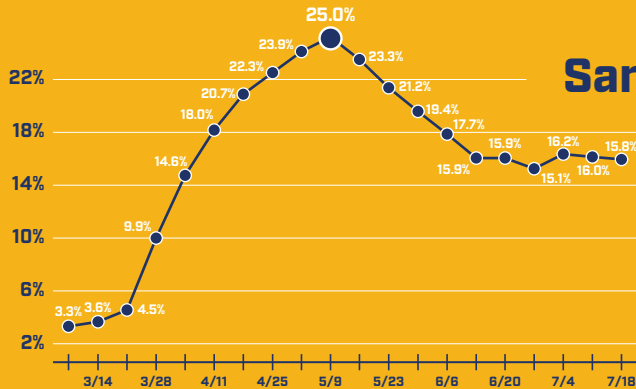


San Diego and Imperial Counties Community Colleges

# WE CAN HELP YOU TRAIN FOR PANDEMIC-RESILIENT CAREERS

New research reveals the most high-demand, high-wage jobs in the region; laid-off or displaced workers can **retrain or upgrade job skills in as little as two years for just \$46 per credit.**

## UNEMPLOYMENT SKYROCKETED DURING THE PANDEMIC



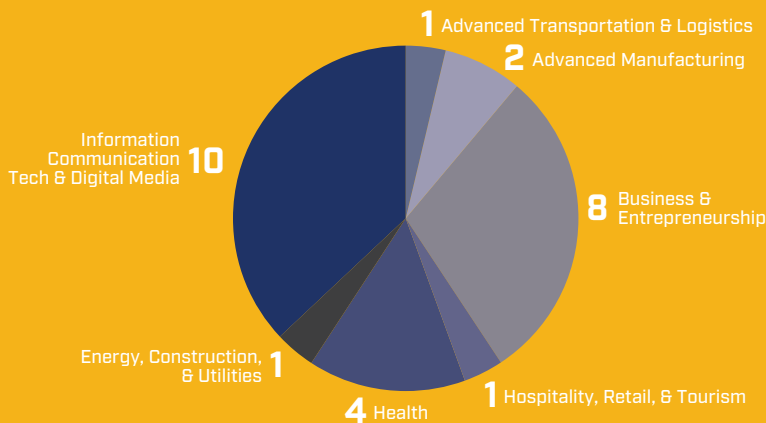
### San Diego County Unemployment Rate

# 25%

Regional unemployment hit an **all-time high** in **May** of this year

Source: Biweekly data from Applied Geographic Solutions, Inc., Thousand Oaks, California, Weekly Release June 23, 2020 (for data until June 13) and Weekly Release July 27, 2020 (after June 13)

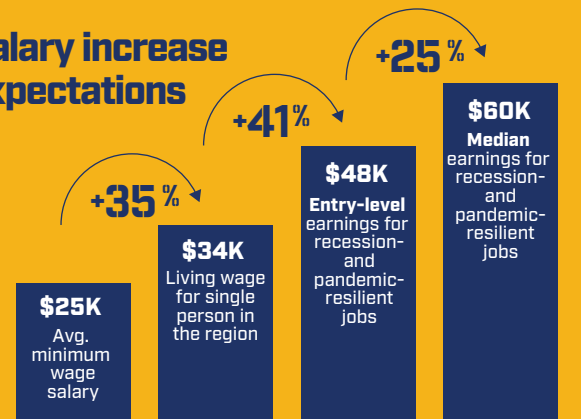
## 27 PANDEMIC-RESILIENT CAREERS ACROSS 7 JOB SECTORS



## THRIVING JOBS AND SALARY GROWTH

Career Education provides training for displaced or minimum wage workers.

### Salary increase expectations



Data based on jobs that experienced stability or growth during 2007-2009 recession and have been pandemic resilient

## PANDEMIC-RESILIENT TRAINING PROGRAMS ENROLLING NOW

- |                             |                        |                                |                        |
|-----------------------------|------------------------|--------------------------------|------------------------|
| Accounting Specialist       | Food Service Manager   | Network Administrator          | Retail Sales Manager   |
| Computer Systems Analyst    | Medical Assistant      | Software Application Developer | Office Manager         |
| Computer Support Specialist | Construction Manager   | Property, Real Estate, and     | Web Developer          |
| Cybersecurity Specialist    | Computer Game Designer | Community Association Manager  | Database Administrator |

**COMMUNITY COLLEGES**

SAN DIEGO & IMPERIAL COUNTIES

**CAREER EDUCATION**

For information on Pandemic-Resilient Careers and Career Education opportunities near you, please visit [careered.org/back-2-work](http://careered.org/back-2-work).

All information based on San Diego-Imperial Center of Excellence for Labor Market Research Oct. 2020

**CareerEd.org**